



---

[www.japanairfilter.com](http://www.japanairfilter.com)

---

# Japan Air Filter Company

- Japan Air Filter (JAF), Founded in 1960, has provided extensive Air Purification Products & Solutions across the world.
- JAF is firmly committed towards the mission of being one of the leading air filtration companies by supplying genuine products that can contribute to preserve global environment and demonstrate the Best Performance in the Air Purification Industry.
- JAF Emphasis on Continuous Improvement in its product line through the qualified Research & Development Team to have the available technologies updated to contemporary requirements. JAF offers the Best Air Purification Products & Services to the customers with highest satisfaction guarantee.
- Market Leader in Japan, with annual sales > US\$230M

## Air Filtration Market Leader in Japan



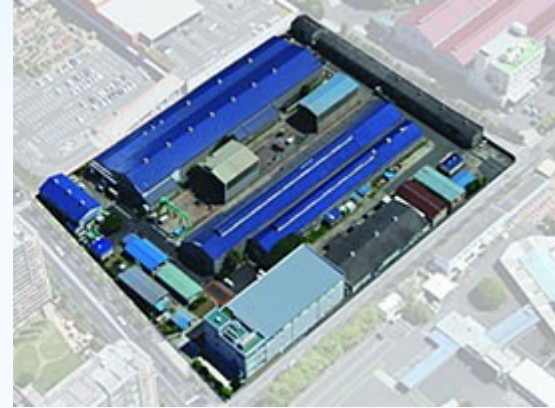
**Environmental Betterment  
through Engineering Support**



# JAF Head Office & Factory



**Japan Head Office  
Harmony Tower  
Tokyo Japan**



**Japan Factory**



**Malaysia  
Head Office &  
Factory**

# Why to filter the air? Haze

Soot

droplets

Molecular Pollutants

Fog

Vapour

Solid matter

Particles

Mist

Radioactive

# Where do particles come from?

## Common Outdoor Pollutants



### NATURE

Forest Fire  
Sand / Dust Storms  
Sea foam/ Salt  
Volcanic eruptions  
Etc.,



PHOTO ILLUSTRATION/ARTIST

### MAN MADE

Combustion, heating 29%  
Transport, vehicles, marine and aviation 33%  
Industrial Emission 38%

# Basically Air Pollution Can Cost A Lot...

- Physical & Mental Illness of people.
- Contaminations causing Process related failures, reduced yield, etc.
- Corrosion and related damages of Electronics, process equipment, antiques, etc.
- Damage on the environment  
Pollution of farms and water (acid rain), lower harvests etc.,
- Adverse results in chemical & Biological researches etc.
- Increase of Carbon Foot Print...



# Good IAQ can help you to



Reduce sick leave by 35%



Increase office productivity by 10%



Keeping energy costs down



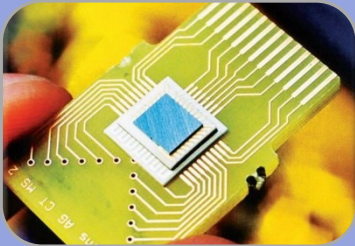
Keeping your heating and cooling system clean



Keeping energy costs down

# Application Overview

## Better Air for Processes



Pharmaceutical  
Microelectronics  
Oil & Gas  
Pulp & Paper  
Food & Beverage  
Laboratories

## Better Air for People



Homes & Welfare Cntrs.  
Airports  
Commercial Buildings  
Hospital & Healthcare  
Schools  
Museums

## Better Air for Environment



Coal & Mining  
Chemicals  
Pharmaceutical  
Ceramics & Steel  
Kitchen Ecology  
Sewage Treatment

## Better Air for Power Systems

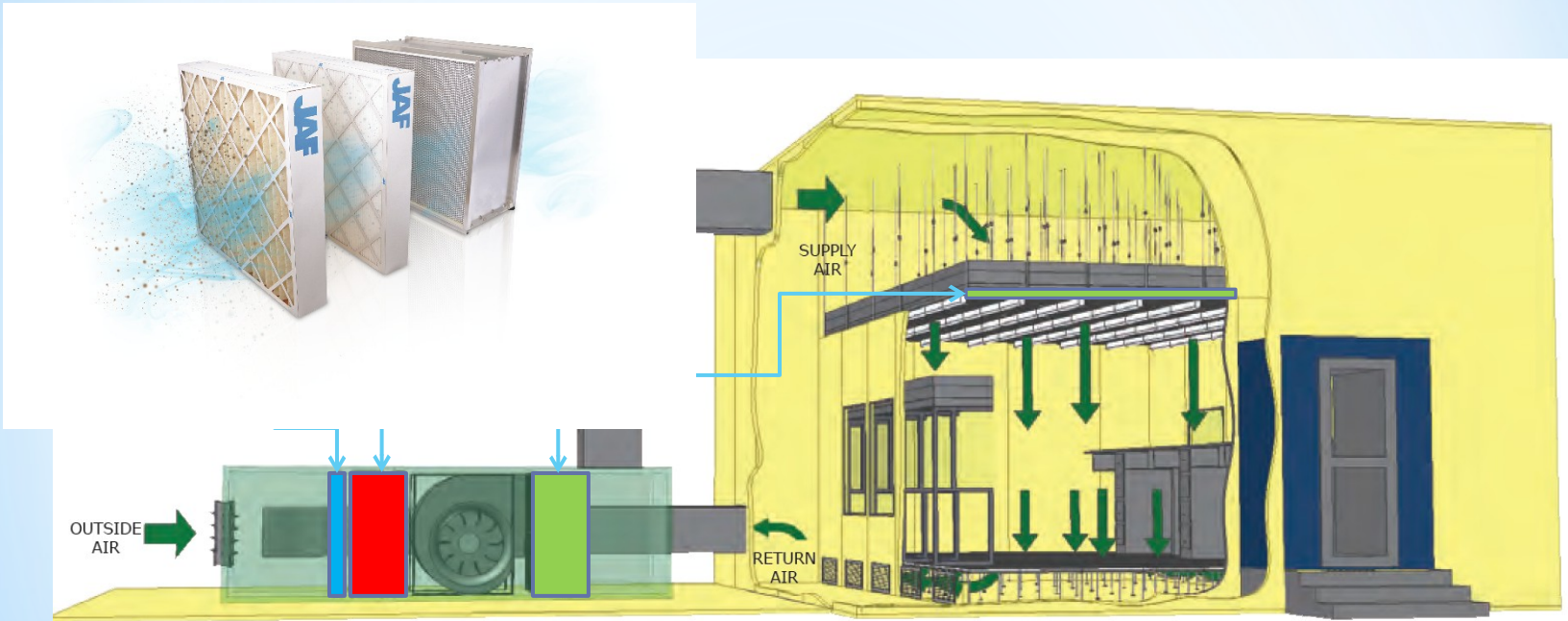


Gas Turbine  
Diesel  
Compressors  
Railroad & Marine

## Better Air for Nuclear Plants



# Air Filtration Typical Layout



| TYPE   | 1.PRE-FILTER   | 2.SECONDARY  | 3.HEPA   |
|--------|--|--|--|
| MODELS | <ul style="list-style-type: none"> <li>• Disposable Panel</li> <li>• Washable Panel</li> <li>• Bag Filter</li> </ul>         | <ul style="list-style-type: none"> <li>• Bag Filter</li> <li>• Box Filter</li> <li>• Disposable Panel</li> <li>• V-Bank</li> </ul> | <ul style="list-style-type: none"> <li>• Box Filter</li> <li>• Ceiling Panel Filter</li> <li>• V-Bank</li> </ul> |
| RATING | <ul style="list-style-type: none"> <li>• ASHRAE 52.2: MERV 1-8</li> <li>• EN779: G1-G4</li> <li>• ISO16890: ePM10</li> </ul> | <ul style="list-style-type: none"> <li>• ASHRAE 52.2: MERV 9-16</li> <li>• EN 779: M5-F9</li> <li>• ISO 16890: ePM2.5</li> </ul>   | <ul style="list-style-type: none"> <li>• EN1822</li> <li>• IEST : H10-U17</li> <li>• ISO 16890: ePM1</li> </ul>  |

# **JAF PRODUCT PORTFOLIO**

## **PARTICULATE FILTRATION**



# JAFM Particulate Filters & Equipment Line-up

## PRE-FILTER

G1 - G4 Class (EN 779)



DeaMat



DeaKleen



MiraDeep Borsa G



JS - FB Mat



JS Mat EC/SD/SU



DeaMat GPM



DeaMat GDM

## SECONDARY FILTER

M5 - F9 Class (EN 779)



MiraPack R



MiraCel I



MiraCel II



MiraCel FB



MiraCel V



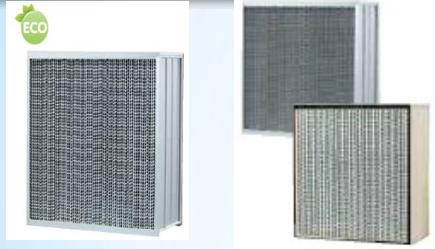
MiraDeep Borsa FG



MiraDeep Borsa

## HEPA/ULPA FILTER

H10 - U17 ( EN 1822 )



LunaCel



LunaKleen



LunaCel V



LunaCel VBX

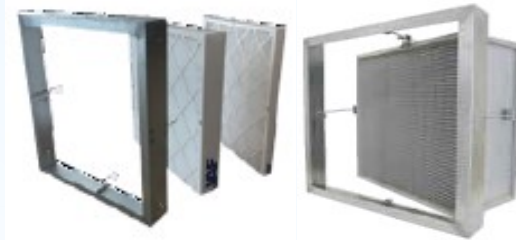
## EQUIPMENT



LunaFan AC/EC



LunaKleen Hood



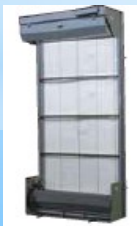
Holding Frames



DeaVane Housings



Kitchen Ecology Unit



Rotor



Cyclecleaner



Air Shower



Pass Box



Clean Booth



Clean Bench

# PREFILTER SERIES

## Roll Type Pre-Filter

### JS - FB Mat

- G3
- Fibre glass media
- 2.5 m/s
- DHC 475 g/m<sup>2</sup>
- White, impregnated with gel, scrim at clean air side



## Roll Type Pre-Filter

### JS Mat EC/SD/SU

- G2, G3, G4, M5
- Standard length 20 m
- Synthetic fibre media
- Excellent in heat resistance and water resistance
- Inflammable



## Synthetic Fiber Pre-Filter

### DeaKleen EC/SD/SU/SP/MG

- G4, M5
- Beverage board, Galvanized steel
- Standard depth 22mm, 44mm and 95mm
- Non-woven cotton synthetic blend
- Intercept is available
- UL certified



## Roll Type Ceiling Filter - Paint Booth

### JS Mat GPM30 / GPM 60

- M5
- Standard length 2 x 20m
- Standard thickness 18mm, 22mm
- 100% Polyester Fibre
- Come with scrim



# PREFILTER SERIES

## Standard Synthetic Fiber Pre-Filter

### DeaMat EC/SD/SU

- G2, G3, G4
- Standard depth 21mm, 46mm and 95mm
- Synthetic fibre pre-filter in the form of pad
- Size of the pad is customizable



## Standard Pre-Filter

### DeaMat G50/G60/G85/G90

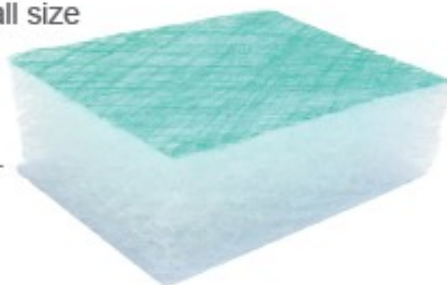
- G1, G2, G3, G4
- Standard depth 25mm, 50mm and 100mm
- Fibre glass media
- Size is customizable



## Glass Fiber Pre-Filter For Paint Mist Usage

### DeaMat GPM

- Fibre glass filter with progressive density for paint mist.
- High capacity for overall size of 50mm thickness for paint mist
- Improve paint mist operation environment.



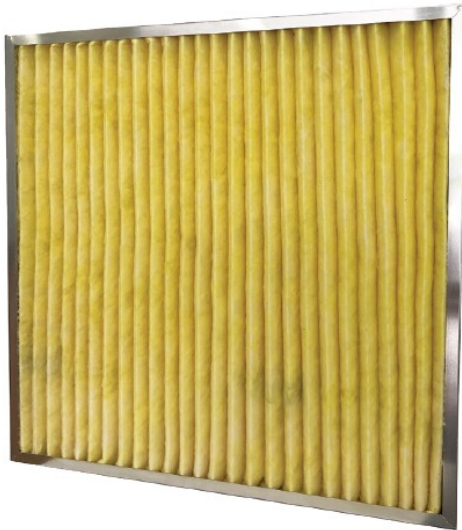
## Pre-Filter

### Grease Filter

- Aluminium
- Multiple layers of corrugated and fine mesh expanded metal sheets
- Standard depth 46mm
- Washable and suitable for air or grease application



# PREFILTER SERIES



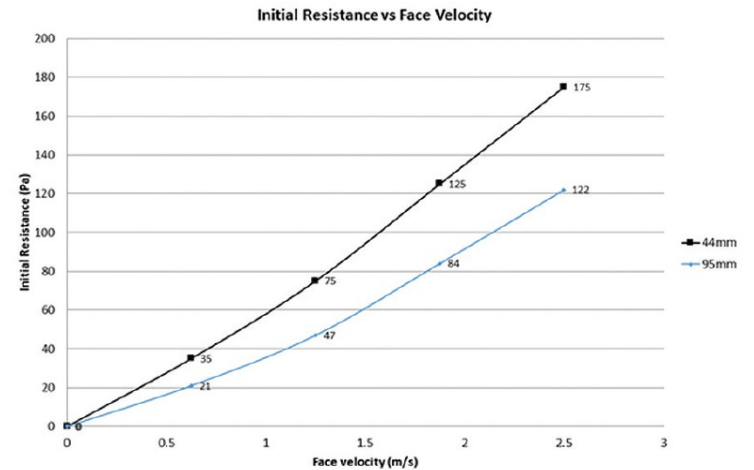
## DeaKleen HT

- Fiber Glass High Temperature Panel Filter
- Galvanised steel frame
- High air flow rate
- Low initial pressure drop
- Heavy dust holding capacity
- Longer service life
- Pre-filter for auto mobile and industrial coating lines at hot air ovens

### Material And Operating Condition

|                       |                  |
|-----------------------|------------------|
| EN779                 | G4 Class         |
| Cellside              | Galvanized Steel |
| Media                 | Fibre Glass      |
| Operating Temperature | 260°C            |
| Support Grid          | wire mesh grid   |

### Initial Resistance for DeaKleen HT

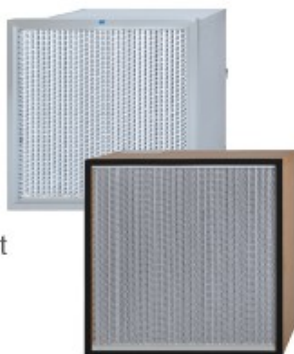


# SECONDARY FILTER SERIES

## Standard Type Medium High Efficiency Filter

### MiraCel

- F6, F7, F8, F9
- Dual density, ultra-fine fibreglass
- Corrugated aluminium
- Available in single header, double header and non header
- Galvanized steel, Anodized aluminium, Stainless steel, MDF, Plywood, Fire retardant plywood
- Standard depth 149mm & 292mm
- UL certified



## Mini-Pleat Type Medium High Efficiency Filter

### MiraCel II

- F6, F7, F8, F9
- Dual density, ultra-fine fibreglass
- Available in Beverage board, Water resistant board
- Standard depth 95mm
- UL certified



## High Air Flow Type Medium High Efficiency Filter

### MiraCel HT

- F6, F7, F8, F9
- Ultra-fine fibreglass
- Corrugated aluminium
- Available in single header, double header, and non header
- Galvanized steel, Anodized aluminium, Stainless steel, MDF
- Standard depth 149mm & 292mm
- Temperature Limit up to 250°C
- UL Certified



## Standard Type Medium High Efficiency Filter

### MiraCel II MH

- F6, F7, F8, F9
- Dual density, ultra-fine fibreglass
- Available in single header, double header & none header
- Aluminium, galvanized steel
- Standard depth 105mm
- UL Certified

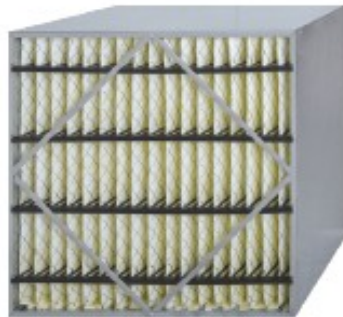


# SECONDARY FILTER SERIES

## Standard Type Medium High Efficiency Filter

### MiraCel MB

- M5, M6, F7, F8, F9
- Galvanized steel
- Standard depth 292mm
- Meltblown synthetic media protected by scrim on the air-leaving side
- UL certified



## Bag Type Medium High Performance Filter

### MiraDeep Borsa FG

- F6, F7, F8, F9
- Galvanized steel
- Standard depth 514mm and 920mm
- Unique fine fibre media to maintain efficiency
- Longer life span and high dust holding capacity
- Intercept is available
- UL certified



## Bag Type Pre-Filter

### MiraDeep Borsa G

- G4
- Galvanized steel
- Standard depth 305mm
- High performance synthetic media pocket filter
- Unique pocket design enables the filter to have high dust holding capacity and long service life characteristics
- Intercept is available
- UL certified



## Bag Type Medium High Performance Filter

### MiraDeep Borsa

- F6, F7, F8, F9
- Galvanized steel
- Standard depth 12" , 15" , 21" , 24" , 30" and 36"
- Synthetic fibre media offers high product strength
- Longer lifespan and high dust holding capacity
- Intercept is available
- UL certified



# SECONDARY FILTER SERIES



Energy saving | environmental friendly



Rigid Bag Type Medium High Performance Filter

## MiraDeep Borsa PS

- G4, M5, M6, F7
- 100% synthetic media
- Molded Header does not corrode and can be incinerated
- Low pressure drop design greatly reduce operating cost
- High dust holding capacity provided extended life

High Air Flow Type Medium High Efficiency Filter

## MiraCel II HT

- F6, F7, F8, F9
- Dual density, ultra-fine fibreglass
- Stainless steel, Galvanized steel
- Temperature Limit up to 250°C
- Standard depth 105mm
- UL certified



High Air Flow Type Medium High Efficiency Filter

## MiraCel V

- F6, F7, F8, F9
- Ultra-fine fibreglass
- ABS
- Standard depth 292mm
- Longer life span due to mini pleated arranged in V-shape
- UL certified



# SECONDARY FILTER SERIES



High Air Flow Type Medium High Efficiency Filter

## MiraCel V

- Available in efficiencies M6, F7, F8 and F9
- Designed for high air volume application
- More media areas with low pressure drop
- longer lifespan
- Low energy consumption

### Specification

| Nominal Size<br>W×H×D (in) | Actual Size<br>W×H×D (mm) | Air Flow<br>CMM / CFM | Weight<br>(kg) | Average Efficiency<br>(%) | Pressure Resistance (Pa) |       |
|----------------------------|---------------------------|-----------------------|----------------|---------------------------|--------------------------|-------|
|                            |                           |                       |                |                           | Initial                  | Final |
| 24x12x12                   | 592x287x292               | 28 / 1000             | 5              | F9<br>>95%<br>MERV 15     | 130                      | 500   |
| 24x24x12                   | 592x592x292               | 56 / 2000             | 8.5            |                           |                          |       |
| 24x12x12                   | 592x287x292               | 28 / 1000             | 5              | F8<br>90-95%<br>MERV 14   | 110                      |       |
| 24x24x12                   | 592x592x292               | 56 / 2000             | 8.5            |                           |                          |       |
| 24x12x12                   | 592x287x292               | 28 / 1000             | 5              | F7<br>80-85%<br>MERV 13   | 90                       |       |
| 24x24x12                   | 592x592x292               | 56 / 2000             | 8.5            |                           |                          |       |
| 24x12x12                   | 592x287x292               | 28 / 1000             | 5              | M6<br>60-65%<br>MERV 11   | 85                       |       |
| 24x24x12                   | 592x592x292               | 56 / 2000             | 8.5            |                           |                          |       |

Measurement method : ASHRAE 52.1 & 52.2 EN779  
 Inflammability : UL Class 900 Other sizes are available upon request

Initial Resistance +/-10%

# SECONDARY FILTER SERIES

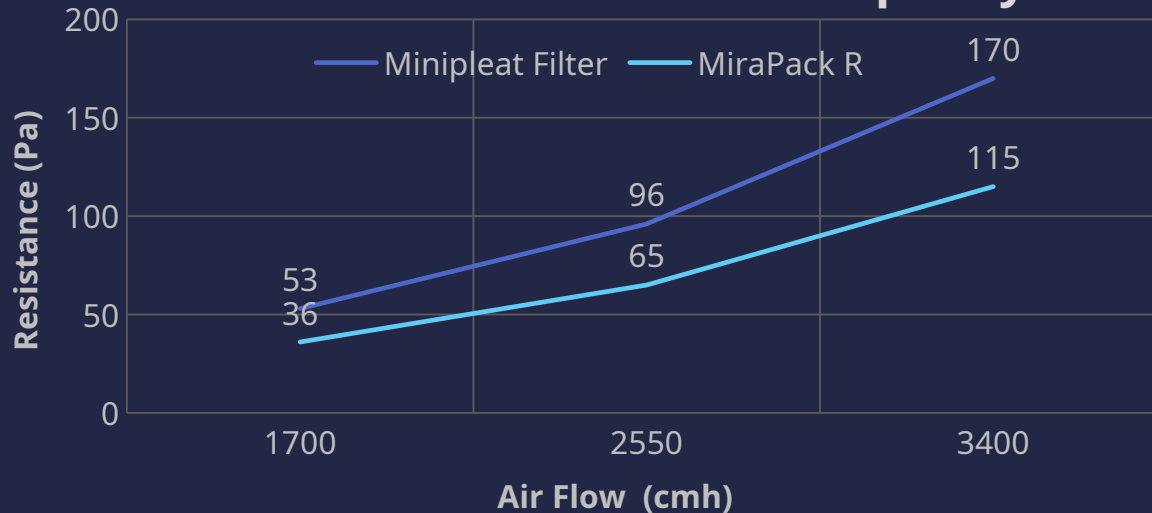


Standard Type Medium High Efficiency Filter

## Mirapack R Flange/Box Type

- M6, F8, F9
- 150Pa @ 2000CFM - refer to F9
- Galvanized steel
- Standard depth 150mm
- Environmental friendly
- Replace only with media pack

## Initial resistance vs air Capacity



# HEPA FILTER SERIES



High Air Capacity HEPA Filter

## LunaCel TS

- H10, H11, H12, H13, H14
- Ultra-fine fire retardant fibreglass
- Corrugated aluminium
- Low pressure drop
- Galvanized steel, Anodized aluminium, Stainless steel, MDF, Plywood
- Standard depth 149mm and 292mm
- Available in dry seal and gel seal to create leak-free connection to the hardware
- Energy saving and environmental friendly
- UL certified

24x24x12" (610x610x292mm)  
H13 Class, 2000CFM (3400CMH) @  
230Pa

High Air Capacity HEPA Filter

## LunaCel STD

- H10, H13, H14, U15
- Ultra-fine fire retardant fibreglass
- Corrugated aluminium
- Galvanized steel, Anodized aluminium, Stainless steel, MDF, Plywood
- Standard depth 149mm and 292mm
- Available in dry seal and gel seal to create leak-free connection to the hardware
- UL certified



24x24x12" (610x610x292mm)  
H13 Class, 1000CFM (1700CMH) @  
250Pa

High Air Capacity HEPA Filter

## LunaCel HC HT

- H10, H13, H14, U15
- Ultra-fine fire retardant fibreglass
- Corrugated aluminium
- Galvanized steel, Stainless steel
- Standard depth 149mm and 292mm
- Gasket Red Silicone
- Temperature Limit up to 250°C
- UL certified



24x24x12" (610x610x292mm)  
H13 Class, 2000CFM (3400CMH) @  
350Pa



# HEPA FILTER SERIES

Standard Type Mini-Pleat Hepa/ULPA Filter

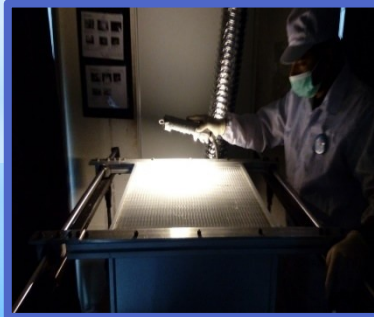
## LunaKleen

- H13, H14, U15, U16, U17
- Moisture resistant, fire retardant fibreglass
- Anodized extruded aluminium
- Standard depth 69mm, 81mm, 93mm and 117mm
- Gel seal
- Jointless polyurethane gasket
- UL certified
- FM certified



24x24x3" (610x610x69mm)

H14 Class, 350CFM (600CMH) @ 110Pa



**FM APPROVED**

**Certificate of Compliance**

This certificate is issued for the following:  
LunaKleen (HEPA & ULPA) ceiling panel filter and  
LunaKleen Hood (HEPA & ULPA) ceiling panel filter assemblies  
Prepared for:  
JAPAN AIR FILTER MALAYSIA SDN BHD  
Lot 4, Jalan Halim 1616, Seksyen 16, Shah Alam  
Industrial Estate, 40200 Shah Alam, Selangor  
Malaysia  
FM Approvals Class: 4920  
Approval Identification: 3065199 Approval Granted: 1/7/2018  
To verify the availability of the Approved product, please refer to [www.approvalguide.com](http://www.approvalguide.com)

Said Approval is subject to satisfactory field performance, continuing Surveillance Audit, and strict conformity to the  
commitments as shown in the Approval Guide, an online resource of FM Approvals.

*Cynthia E. Stand*

Cynthia Frank  
VP - Manager of Materials  
FM Approvals  
1121 Boston-Providence Turnpike  
Norwood, MA 02062

**FM Approvals**  
Member of the FM Global Group

# HEPA FILTER SERIES



## PTFE Type HEPA / ULPA Filter

### TetraKleen

- Ultra-high efficiency PTFE membrane
- Available for high efficiency H13, H14, U15, U16 and U17
- Ultra-low resistance to achieve optimum energy efficiency
- Negligible off-gassing properties (eg. boron, sodium, potassium, silicon)
- High durability media, minimize transportation cost, rough handling and installation damages
- High acid resistance to corrosive environment (acids, alkali, organic substances)

24x24x3" (610x610x69mm)

H14 Class, 350CFM (600CMH) @ 55Pa

## PTFE Aluminium Separator

### TetraCel

- H13, H14, U15
- Lower pressure drop than fiber glass
- Low off gassing
- High durability media
- High acid resistant to corrosive environment
- EDPM, jointless polyurethane gasket

24x24x12" (610x610x292mm)

H13 Class, 2000CFM (3400CMH) @

160Pa



# HEPA FILTER SERIES



High Air Capacity Mini-Pleat HEPA Filter

## LunaCel VBX

- Design for high air volume applications
- The enlarged media area ensures lower average pressure drop and longer lifespan filter
- Low energy consumption
- Available for H13 – H14
- V-Bank panels in a single filter enclose allow up to 2500 CFM with minimal airflow resistance of 250Pa

24x24x12" (610x610x292mm)  
H13 Class, 2500CFM (4250CMH) @  
250Pa

### Specification

| Nominal Size<br>W×H×D (in) | Actual Size<br>W×H×D (mm) | Air Flow<br>CMM/CFM | Weight<br>(kg) | Efficiency<br>(% @ 0.3µm) | Pressure Resistance (Pa) |       |
|----------------------------|---------------------------|---------------------|----------------|---------------------------|--------------------------|-------|
|                            |                           |                     |                |                           | Initial                  | Final |
| 12x24x12                   | 305×610×292               | 25 / 1145           | 9.5            | 99.999<br>(H14)           | 280                      | 750   |
| 24x24x12                   | 610×610×292               | 66 / 2500           | 16             |                           |                          |       |
| 12x24x12                   | 305×610×292               | 25 / 1145           | 9.5            | 99.99<br>(H13)            | 250                      |       |
| 24x24x12                   | 610×610×292               | 66 / 2500           | 16             |                           |                          |       |

Measuring method: IES-RP-1 & EN1822

Inflammability: UL Class 900 Other sizes are available upon request

Initial Resistance +/-10%

# HEPA FILTER SERIES



High Air Capacity Mini-Pleat HEPA Filter

## LunaCel V

- Designed for high air volume application
- More media areas with low pressure drop
- Longer lifespan
- Low energy consumption
- ABS Frame
- Available from H10 to H14

### Specification

| Nominal Size<br>W×H×D (in) | Actual Size<br>W×H×D (mm) | Air Flow<br>CMM/CFM | Weight<br>(kg) | Efficiency<br>(% @ 0.3µm) | Pressure Resistance (Pa) |       |
|----------------------------|---------------------------|---------------------|----------------|---------------------------|--------------------------|-------|
|                            |                           |                     |                |                           | Initial                  | Final |
| 24x12x12                   | 592x287x292               | 28 / 1000           | 5              | 99.99<br>(H13)            | 280                      | 600   |
| 24x24x12                   | 592x592x292               | 56 / 2000           | 8.5            |                           |                          |       |
| 24x12x12                   | 592x287x292               | 28 / 1000           | 5              | 99.95<br>(H12)            | 265                      |       |
| 24x24x12                   | 592x592x292               | 56 / 2000           | 8.5            |                           |                          |       |
| 24x12x12                   | 592x287x292               | 28 / 1000           | 5              | 98<br>(E11)               | 200                      |       |
| 24x24x12                   | 592x592x292               | 56 / 2000           | 8.5            |                           |                          |       |
| 24x12x12                   | 592x287x292               | 28 / 1000           | 5              | 95<br>(E10)               | 190                      |       |
| 24x24x12                   | 592x592x292               | 56 / 2000           | 8.5            |                           |                          |       |

Measuring method: IES-RP-1 & EN1822

Inflammability: UL Class 900 Other sizes are available upon request

Initial Resistance +/-10%

# HEPA FILTER SERIES



High Air Capacity Mini-Pleat HEPA Filter

## LunaCel VL

- Design for high air volume applications
- The enlarged media area ensures lower average pressure drop and longer lifespan filter
- Low energy consumption
- Available for H13 – H14
- V-Bank panels in a single filter enclose allow up to 2500 CFM with minimal airflow resistance of 1.0" w.g

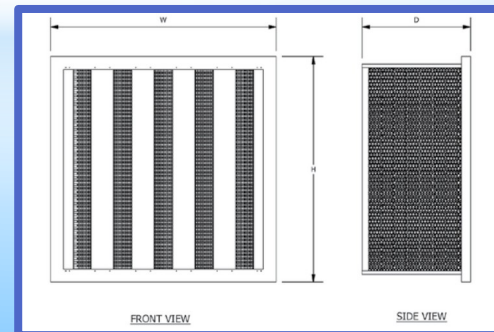
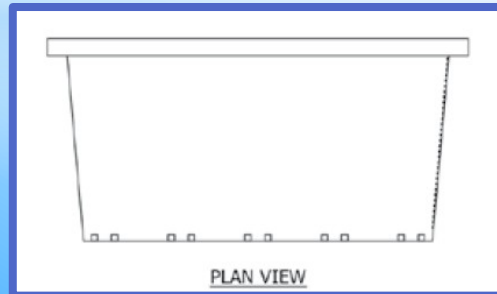
### Specification

| Nominal Size<br>W×H×D (in) | Actual Size<br>W×H×D (mm) | Air Flow<br>CMM/CFM | Weight<br>(kg) | Efficiency<br>(% @ 0.3µm)   | Pressure Resistance (Pa) |       |
|----------------------------|---------------------------|---------------------|----------------|-----------------------------|--------------------------|-------|
|                            |                           |                     |                |                             | Initial                  | Final |
| 24x12x12                   | 592x287x292               | 32/1145             | 9.5            | 99.99<br>and above<br>(H13) | 250                      | 750   |
| 24x24x12                   | 592x592×292               | 70/2500             | 16             |                             |                          |       |

Measuring method: IES-RP-1 & EN1822

Inflammability: UL Class 900 Other sizes are available upon request

Initial Resistance +/-10%

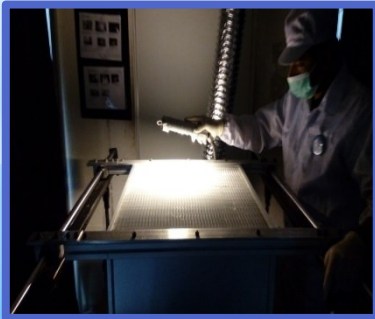


# CLEANROOM TERMINAL FILTER HOUSING SERIES

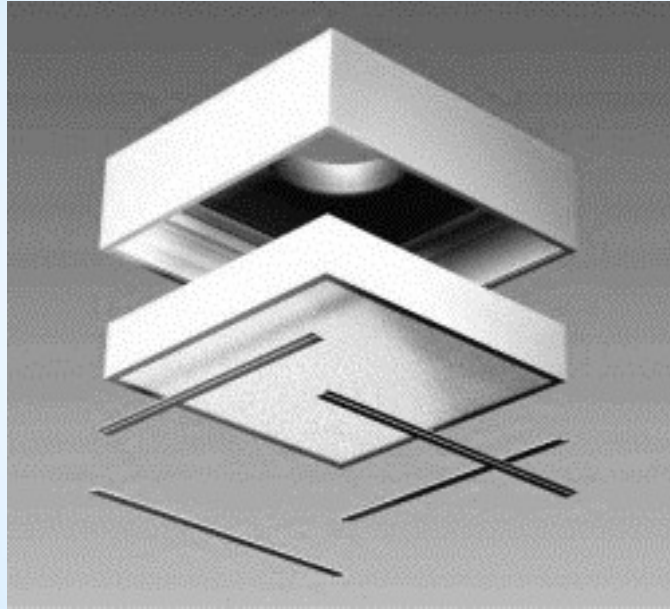
## LunaKleen Hood



- Lightweight - Extruded Aluminum casing
- Efficiencies from H13 - U17 Class
- Disposable HEPA Module
- Adjustable distribution damper
- Low profile housing - 125 / 152 / 175 mm
- One piece top with integral inlet collar
- UL & FM Approved

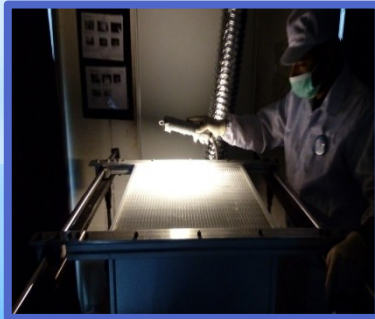


# CLEANROOM TERMINAL FILTER HOUSING SERIES

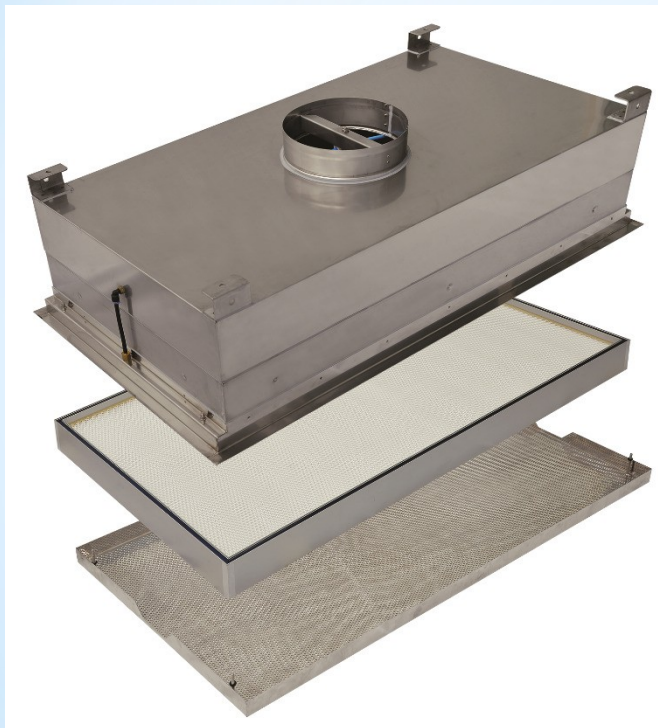


## LunaKleen GHood

- **Lightweight - Extruded Aluminum casing**
- **Efficiencies from H13 - U17 Class**
- **Replaceable HEPA Module with Gel Seal Hepa Filters**
- **Adjustable distribution damper**
- **Low profile housing - 125 / 152 / 175 mm**
- **One piece top with inlet collar**

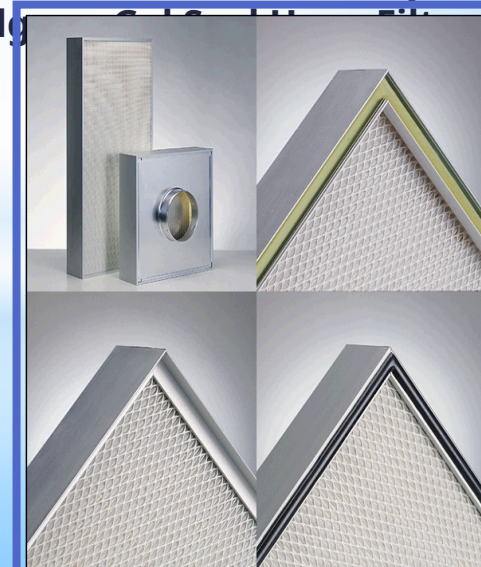
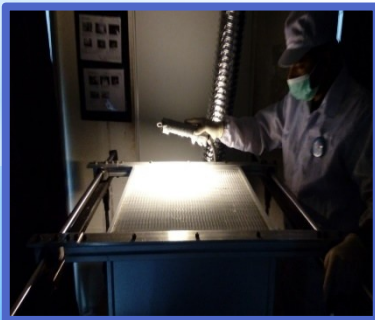


# CLEANROOM TERMINAL FILTER HOUSING SERIES



## LunaPharm Hood

- Welded Housing
- Available in Stainless Steel, Aluminium or GI Steel c/w Powder coating
- Both Top or Side air Inlet Collars possible
- Stainless Steel Perforated Grill
- Adjustable Diffuser Plate / Radial Damper
- Easy PAO Testing at Site
- Options available to use both Dry Seal or Knife Edge



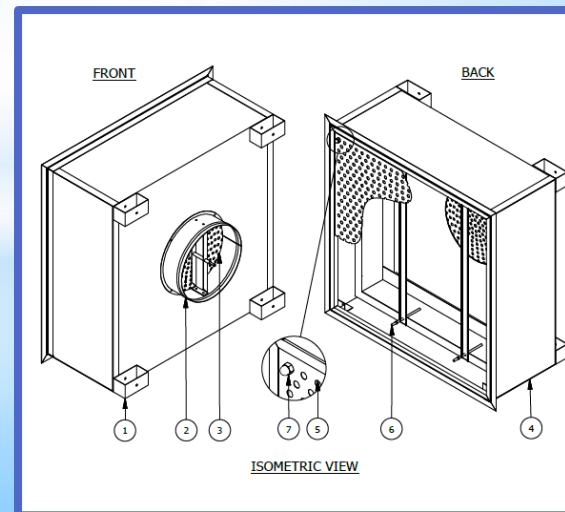
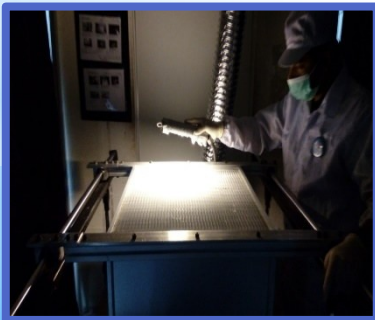
# CLEANROOM TERMINAL FILTER HOUSING SERIES



## Standard Type HEPA Filter Ceiling Module

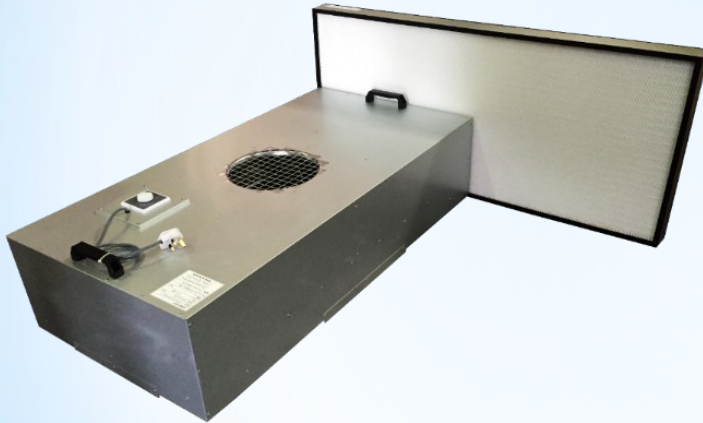
### LunaBox

- Replaceable HEPA Filter Ceiling Module
- Available in efficiency H13 and H14
- Designed for use as clean air supply module for Class 10,000 and 100,000 controlled areas
- The filter housing is permanently installed and only the HEPA Filter need to be replaced
- Designed for HEPA Filter replacement from room side
- Available for dry seal and gel seal HEPA Filter
- This housing is designed to accommodate HEPA Filter Depth 69mm, 149mm and 292mm



# CLEANROOM TERMINAL FILTER HOUSING SERIES

## LunaFan AC/EC



- Self-Contained Ceiling Unit with In-Built Fan & Terminal Hepa Filter
- Available in Stainless Steel, Aluminium or Galvalume & other Metal options
- Can achieve cleanliness of Class 1k (ISO 6) to Class 1 (ISO 3).

## LunaFan AC

- Direct Drive, Backward Curved 1ph (or) 3ph AC Motors c/w Variable Speed Controllers
- Top (or) Bottom Fan Access options
- Room Side Change (RSC) option with Perforated Plate Diffuser Grill

## LunaFan EC

- Electronically Commuted Brushless DC Motors
- Maximum vibration level to ISO 1940 G2.5 std.
- Smart Electronic Control (EC) FFU system
- Advanced and reliable control system technology with Low energy consumption
- One stop control for 7688 FFU units and more

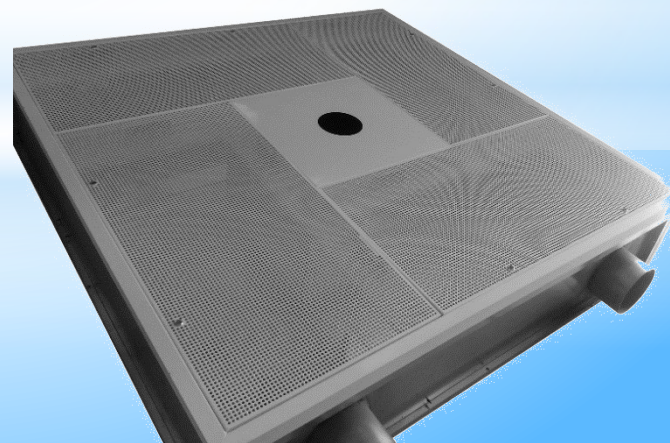
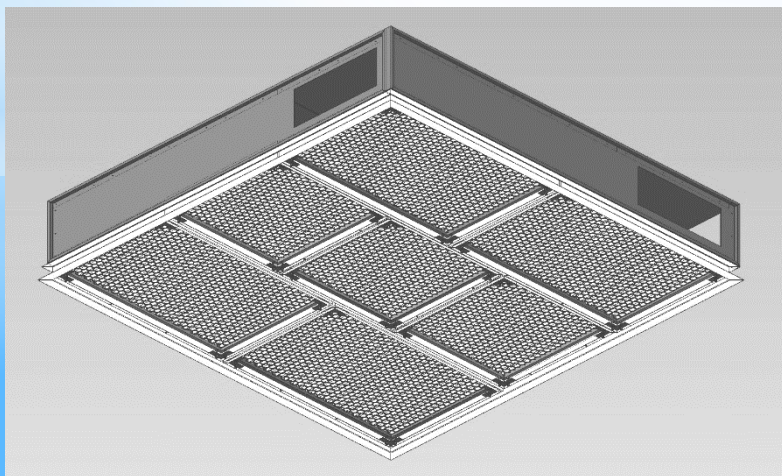


# CLEANROOM TERMINAL FILTER HOUSING SERIES



## Laminar Flow OT Plenum

- Best Performance Filter Module with proven results for Laminar Flow
- Sturdy, Leak-Proof, Air Tight Dry Seal Construction
- Standard Stainless Steel, AISI SS304 Construction
- Also, Available in Various Other Sheet Metal Options
- Modular, Compact Design with Minimum Ceiling Depth
- In-Built Air Distribution Plenum with Rectangular Connecting Flanges



# CLEANROOM EQUIPMENT SERIES

## Standard Type Air Shower

### Air Shower

- Self-contained chambers
- Minimizes particulate matter entering or exiting the clean space
- High velocity HEPA-filtered air jets



## Standard Type Pass Box

### Pass Box

- JAF Pass Box are specially designed for the safe transfer of materials between classified areas or between a classified area and a non-classified area.



## Standard Type Pass-Through

### Pass Box Air Shower

- JAF Pass Box Air Shower are equipped with air jetting system which provides high velocity blower fan and HEPA filtration systems for the safe transfer of materials between classified areas or between a classified area and a non-classified area.



## Standard Type Clean Bench

### Clean Bench

- Standalone adjustable filtered clean air supply
- Laminar air flow
- Ease of assemble and disassembly



# SAFE CHANGE EQUIPMENT SERIES



## Bag-In Bag-Out (BIBO) Safe Change Unit (SCU)

- Radiological Contamination
  - Pharma & Biotechnological Clean Rooms
  - Medical Device Clean Rooms
  - Microelectronics & Nanotechnology
  - Hospital Suites & Isolation Areas
  - Nuclear
- All welded product designed for CRITICAL clean air applications.
  - Permanent housing designed to hold either gasket or gel seal filters.
  - Inside each unit's door(s), a ribbed inlet collar provided for a PVC bag attachment. The PVC bag creates a barrier seal between service personnel and the contaminated filters.
  - T304 12 & 14-gauge stainless steel or - optional T316 12 & 14-gauge stainless steel. L grade is available also (#2B finish).
  - Retrieval rods ease the removal of filters.
  - Door(s) have perimeter gasket in order to ensure a positive seal.
  - Optional ISOKINETIC SCAN SECTION
  - All Housings are factory pressure decay tested in accordance with ANSI/ASME-N510-1995 reaffirmed up to +/- 10" W.G.
  - Vertical (or) Horizontal Flows

# **JAF PRODUCT PORTFOLIO**

## **GAS-PHASE FILTRATION**



# Origin of Gaseous Contaminants

## Odorous

- Restaurants
- Kitchen Exhaust
- Food / Meat processing Areas
- Garbage
- Sewage Treatment



## Corrosive

- Petrochemical
- Petroleum Refineries / LNG
- Fertilizer / Rubber
- Steel / Aluminium
- Pulp & Paper / Geothermal



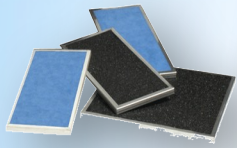
## Toxic

- Vehicle Exhausts / Jet Fumes
- Artifacts / Historic Storages
- Smoking Areas
- Hospitals / Laboratories
- In-Vitro Fertilization Areas

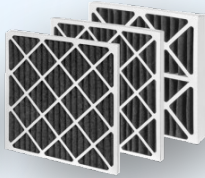


## PLEATED FILTERS & TRAYS

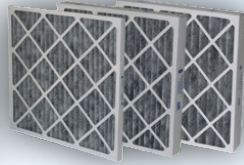
# JAF Gas Phase Filters & Equipment Line-up



AP Trays



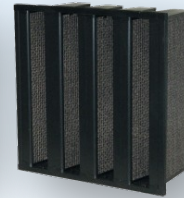
DeaSorb



DeaCarb



MiraSorb



MiraSorb HC



MiraCarb



TetraCarb TY

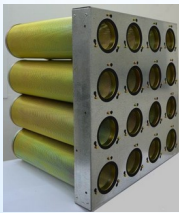


TetraCarb CE

## MODULES & MEDIA



12CS & 18CS Cassettes



Canisters



TerraComb



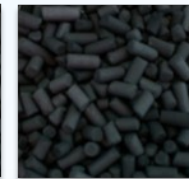
TerraCarb



TerraOxi



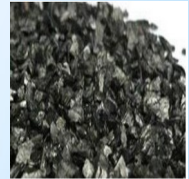
TerraCarb Acid



TerraCarb Base

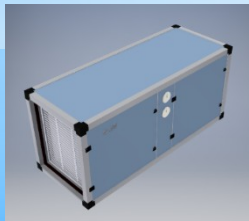


TerraOxi Blend



TerraCarb G

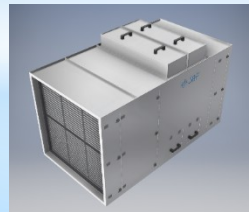
## EQUIPMENT & MONITORING



Side Access Purifier



Stand Alone Purifier



Deep Bed Purifier



Electrostatic Precipitators



Kitchen Ecology Unit



Reactivity Monitoring Kit



Environmental Condition Monitor

**JAF** Product Line is extensive to cater any of the Industrial Requirements

# **MODERATE to HIGH** gaseous contaminant concentrations

## 18CS and 12CS cassette

- For Moderate to High pollutant volume applications
- Standard Plastic (HIPS Extrusion) modules
- Specially designed for Energy Saving
- Available in 12" and 18" standard depths
- Suitable to work up to 500FPM (2.5m/s)
- Supplied with JAF Positive Sealing Tracks
- Choice of Chemical Media: TerraCarb, TerraCarb Acid and TerraCarb Base



**18CS and 12CS  
Cassette**



**TerraCarb**



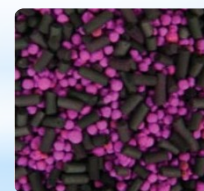
**TerraCarb  
Acid**



**TerraCarb  
Base**



**TerraOxi**



**TerraOxi  
Blend**

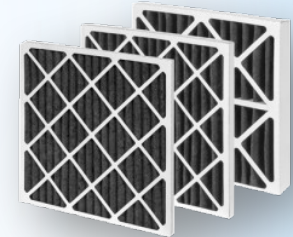


**Other customized Media for  
specific applications**

# **LOWEST** gaseous contaminant concentrations

## **DeaSorb**

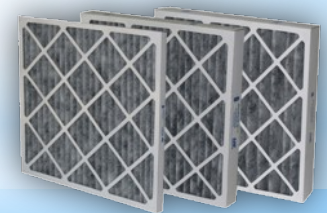
- For Low pollutant volume application
- Suitable for odour and IAQ pollutants removal
- Carbon Media is bonded to Non-Woven Polyester Fibres
- Suitable for retrofit on existing particulate pre-filter
- Available in standard, 1", 2" and 4" depth
- Beverage Board frame, other materials are available



**DeaSorb**

## **DeaCarb**

- Pleated carbon media with in-built particulate filter (G4/MERV7)
- For Low pollutant volume application
- Suitable for odour and IAQ pollutants removal
- Carbon Media is bonded to Non-Woven Polyester Fibres
- Directly interchangeable with standard air filters
- Available in standard, 1", 2" and 4" depth
- Choices of chemical media: VOC, Acid and Base
- Beverage Board frame, other materials are available



**DeaCarb**

# **LOW to MODERATE** gaseous contaminant concentrations

## **MiraSorb**

- For Low to Moderate pollutant volume applications
- Mini-pleated V-bank to maximize the amount of media
- Micro granulate Carbon media
- Completely incinerable (no metal)
- Single Header Only
- Choice of Chemical Media: TerraCarb, TerraCarb Acid and TerraCarb Base
- Option to have in-built particulate filter (F7/MERV13)
- Directly interchangeable with standard air filters

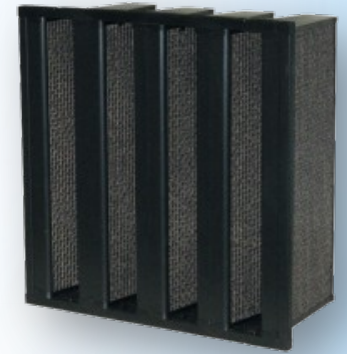


**MiraSorb**

# **LOW to MODERATE** gaseous contaminant concentrations

## **MiraSorb HC**

- For Low to Moderate pollutant volume applications
- High chemical media content
- Chemical media contained in honeycomb structure panels
- Completely incinerable (no metal)
- Single Header Only
- Choice of Chemical Media: TerraCarb, TerraCarb Acid and TerraCarb Base
- Directly interchangeable with standard air filters

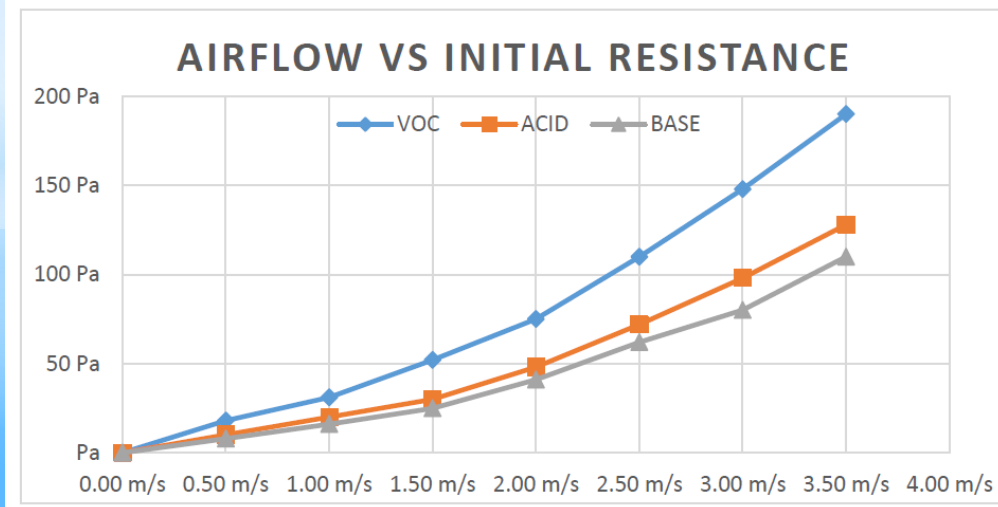


**MiraSorb HC**

# LOW to MODERATE gaseous contaminant concentrations

## MiraCarb

- For Low to Moderate pollutant volume applications
- Rigid Type Extended-Surface filter
- Remove both particulate and gaseous contaminants
- Completely incinerable (no metal)
- Choice of Chemical Media: TerraCarb, TerraCarb Acid and TerraCarb Base
- Available in Single Header, Double Header and Non-Header
- With in-built particulate filter (G4/MERV7)
- Directly interchangeable with standard air filters

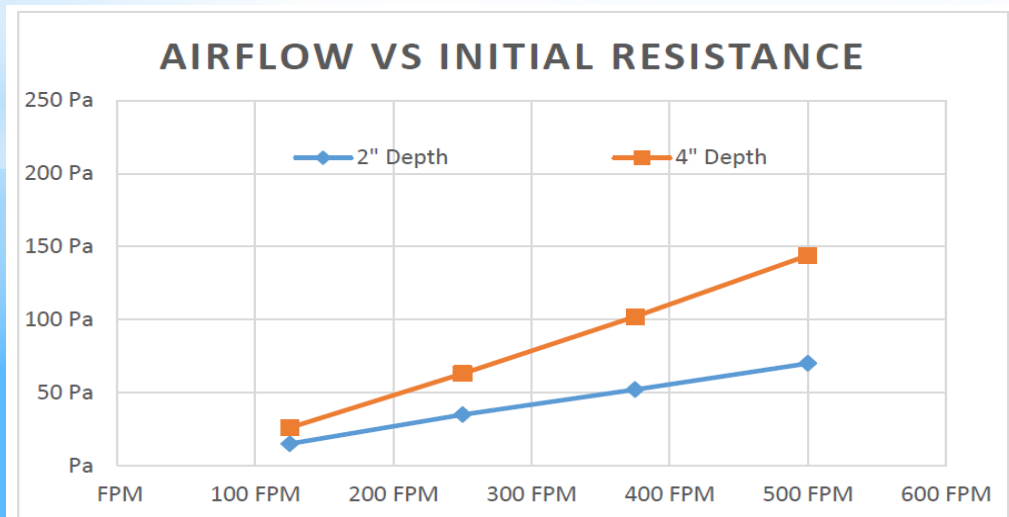


MiraCarb

# **MODERATE to HIGH** gaseous contaminant concentrations

## TerraComb

- For Moderate to High pollutant volume applications
- Consists of Honeycomb activated carbon blocks with large number of parallel Cells
- Space savings, 2" or 4" depth
- Media weight: > 35lbs, 24x24x4"
- Choice of Chemical Media: TerraCarb, TerraCarb Acid and TerraCarb Base
- Easy to install and retrofitting



**TerraComb**



*Japan Air Filter  
Technology & Engineering Company*

**“Air Filtration  
Specialist”**  
**[www.japanairfilter.com](http://www.japanairfilter.com)**

